

# World Christianity Studies & Asymmetrical Dependency (WCSAD)

Working Group

Monthly Table Talk

## Gender, Emotion, and Dependency in the Jesuit Mission to Japan (c.1550-1650)

**Date:** 14 May 2024,  
10 a.m. - 12:00 p.m. CET

**Location:** Hybrid (Conference Room,  
Niebuhrstraße 5, and online via Zoom)

**Registration:** To register, please email  
David B. Smith ([dsmith@uni-bonn.de](mailto:dsmith@uni-bonn.de)).

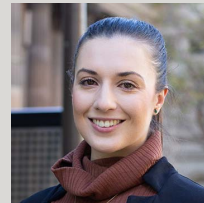
This month's Table Talk will be moderated by Lisa Phongsavath (BCDSS PhD Researcher): it will include talks by two invited guests. Dr. Linda Zampol D'Ortia will explore how the sixteenth-seventeenth-century Jesuit mission to Japan created and maintained a hierarchy within its Christian communities. More specifically, it will consider the emotional practices embodied by these (emotional) communities that supported their imagining into existence. Dr. Jessica O'Leary will present key aspects of her current research project, which involves women and children in the Jesuit Missions and the Portuguese Empire, especially in Brazil and Japan. The discussion will illustrate some of the ways in which scholars at the BCDSS and our partner institutions are exploring important aspects of the history of Christianity in Asia. The discussion of these projects may also shed new light on the relevance of the analytical concept of asymmetrical dependency to world Christianity studies in historical social situations that complexify commonly accepted definitions of slavery, enslavement, and servitude.

**Lisa Phongsavath** is a PhD  
Researcher at the BCDSS.

Her current research project  
investigates the practices of  
trading children in the



eighteenth-century 'Tai world' of  
tia world of central mainland  
Sea. She is also a member of  
the organization team for the  
DAAD/Universities Australia  
co-funded project on 'Child  
Slaveries in the Early Modern  
World: Gender, Trauma, and  
Trafficking in Transcultural  
Perspective (1500-1800).'



**Dr. Jessica O'Leary** is a  
Research Fellow at the Gender  
and Women's History  
Research Centre in the  
Institute for Humanities and

Social Sciences at the Australian Catholic  
University. Her current research project  
focuses on women in the Jesuit Missions  
and the Portuguese Empire, especially in  
Brazil and Japan.

**Dr. Linda Zampol D'Ortia** is  
Marie Skłodowska-Curie Global  
Fellow, Ca'Foscari  
University of Venice and  
Australian Catholic University.



Her current research project, 'Emotions as  
Practice in Early Modern Jesuit Missions in  
the Asia-Pacific' (EMOPractices), approaches  
the sixteenth to eighteenth-century Asian  
enterprises of the Society of Jesus (Jesuit  
Order) through the lens of emotions  
displayed in their correspondences.